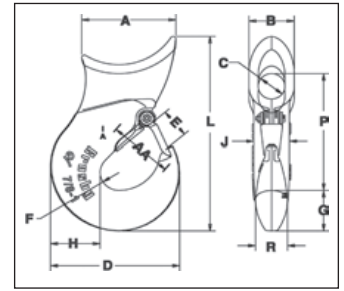


Crosby® Forged Hooks



A-350L
SLIDING CHOKER HOOK

- New style incorporates throat opening equal to or larger than old style hooks.
- Each product has a Product Identification Code (PIC) for material traceability, along with a Working Load Limit, and the name Crosby or "CG" forged into it.
- All hooks incorporate Crosby's patented QUIC-CHECK® marks to help in determining if throat opening dimension has changed.
- Each hook can be equipped with a Crosby S-4320 heavy duty stamped latch with the high cycle, long life spring.
- Forged Alloy Steel -- Quenched and Tempered.



A-350L Sliding Choker Hook

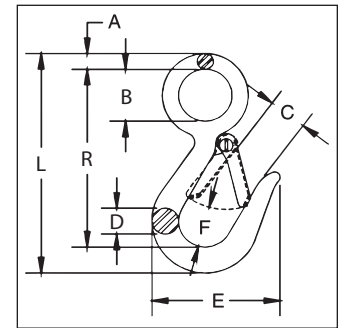
Single Part Rope Size (in.-mm)	Eight Part Rope Size (mm)	A-350L Stock No.	Weight Each (kg)	Dimensions (mm)														Hook Frame Code	Replacement Latch Kit Stock No.
				A	B	C	D	E	F	G	H	L	P	R	AA**				
3/8 - 10	-	1011802	.35	52.5	28.7	16.0	61.0	16.0	9.65	21.3	23.1	109	66.0	16.0	38.1	D	1096325		
1/2 - 13	3	1011811	.54	57.0	33.3	19.1	75.5	19.8	12.7	24.6	26.9	126	78.5	19.1	38.1	F	1096374		
† 5/8 - 16	-	1011820	1.31	77.5	41.4	19.1	90.5	23.9	14.2	28.7	33.3	162	98.5	25.4	50.8	G	1096421		
† 5/8 - 16	4	1011839	1.22	77.5	41.4	25.4	90.5	23.9	14.2	28.7	33.3	162	102	28.7	50.8	G	1096421		
† 3/4 - 20	-	1011848	2.35	86.0	54.0	25.4	108	29.5	16.0	36.6	41.4	195	116	28.7	63.5	H	1096468		
† 3/4 - 20	6-7	1011857	2.27	86.0	54.0	36.6	108	29.5	16.0	36.6	41.4	195	121	28.7	63.5	H	1096468		
†† 22-25	-	1028177	4.40	112	53.8	31.8	154	35.8	22.4	51.0	59.2	243	145	38.1	76.2	I	1096515		

*Ultimate Load is 5 times the Working Load Limit. ** Deformation Indicators. † Determine EYE diameter "C", before ordering. †† 7/8-1" is Cast Steel & furnished with latch attached.



G-3315
SNAP HOOK

- Forged Carbon Steel -- Quenched and Tempered.
- Pressed steel latches and stainless steel springs, bolts and nuts.
- For replacement latch kit, order Stock No. 9900299.
- Hook Body -- Galvanized.



G-3315 Snap Hook

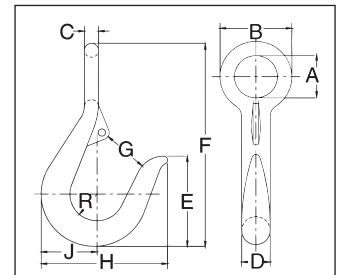
Hook Size (mm)	G-3315 Stock No.	Working Load Limit (t)*	Weight Each (kg)	Dimensions (mm)							
				A	B	C	D	E	F	L	R
12	1023056	.34	.11	6.35	19.1	19.1	11.2	57.0	19.1	100	82.5
14	1023074	.45	.22	8.65	28.4	20.6	14.2	68.5	22.4	120	97.5

*Ultimate Load is 4 times the Working Load Limit.



1210 Round
REVERSE
EYE HOOK

- Forged Carbon Steel -- Galvanized.



1210 Round Reverse Eye Hook

Size (mm)	1210 Stock No.	Working Load Limit (Tons)*	Weight Each (kg)	Latch Stock No.	Dimensions (mm)									
					A	B	C	D	E	F	G	H	J	R
13	919019	.14	.18	1090027	20.6	35.1	7.10	12.7	41.1	102	19.1	57.0	24.6	11.9
16	919037	.18	.27	1090027	23.9	39.6	7.85	15.7	51.0	114	23.9	70.0	31.0	15.0
19	919055	.31	.50	1090045	28.4	47.8	9.65	19.1	57.0	133	26.9	76.0	36.6	17.5
22	919073	.54	.73	1096468	30.2	52.5	11.2	22.4	76.0	165	31.8	86.0	41.4	19.1
26-28	919091	.82	.91	1090081	38.1	70.0	15.7	28.4	89.0	203	38.1	111	51.0	23.9
31-36	919135	1.2	2.49	1090081	47.8	89.0	20.6	35.1	102	232	41.1	127	60.5	26.9

*Ultimate Load is 4 times the Working Load Limit.