



**Features & benefits** ↓

- Usable in all positions
- Protected against ejection of the plunger
- Flat saddle
  - Prevents damage to the plunger
  - Easy to replace with tilting saddle

**Standard** supplied with ↓

- High Flow female coupler A 118
- Flat saddle

**Available** on request ↓

- Cylinders manufactured in conformity with customer specifications
- Collar thread
- Base mounting holes

Tilting saddles	page	95
Hydraulic pumps	page	143
Hydraulic hoses	page	168
Pressure gauges	page	174



Flat saddle



**High tonnage cylinders - Gravity return**

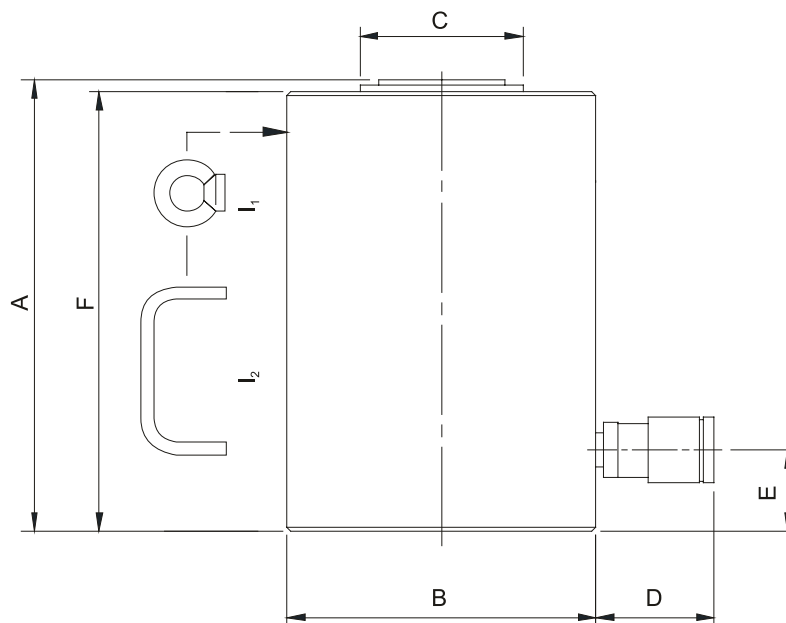


model		HJ 50 G 6	HJ 50 G 15	HJ 50 G 30	HJ 75 G 15	HJ 75 G 30	HJ 100 G 6
art no		100.112.073	100.112.035	100.112.036	100.112.037	100.112.038	100.112.093
max. working pressure	bar/Mpa	720 / 72	720 / 72	720 / 72	720 / 72	720 / 72	720 / 72
<b>tonnage</b>	<b>t</b>	50	50	50	75	75	100
<b>stroke</b>	<b>mm</b>	60	150	300	150	300	60
<b>closed height</b>	<b>mm</b>	142	282	463	347	497	158
capacity	kN/t	510.3 / 52	510.3 / 52	510.3 / 52	747.9 / 76.3	747.9 / 76.3	1029.3 / 105
effective pressure area	cm <sup>2</sup>	70.9	70.9	70.9	103.9	103.9	143
required oil content (effective)	cc	425	1064	2127	1559	3117	860
connection		A 118	A 118	A 118	A 118	A 118	A 118
cylinder type		high tonnage	high tonnage	high tonnage	high tonnage	high tonnage	high tonnage
acting type		single	single	single	single	single	single
return type		gravity	gravity	gravity	gravity	gravity	gravity
material		steel	steel	steel	steel	steel	steel
weight, ready for use	kg	12.5	27.0	39.5	46.0	63.0	29.0

**High tonnage cylinders - Gravity return (dimensions)**



model		HJ 50 G 6	HJ 50 G 15	HJ 50 G 30	HJ 75 G 15	HJ 75 G 30	HJ 100 G 6
dimension A	mm	142	282	463	347	497	158
dimension B	mm	130	130	130	156	156	185
dimension C	mm	80	80	80	80	80	105
dimension D	mm	70	70	70	70	70	70
dimension E	mm	20	25	38	47	47	27
dimension F	mm	135	275	456	340	490	151
I type			l <sub>2</sub>	l <sub>2</sub>	l <sub>1</sub>	l <sub>1</sub>	l <sub>2</sub>



**High tonnage cylinders - Gravity return**

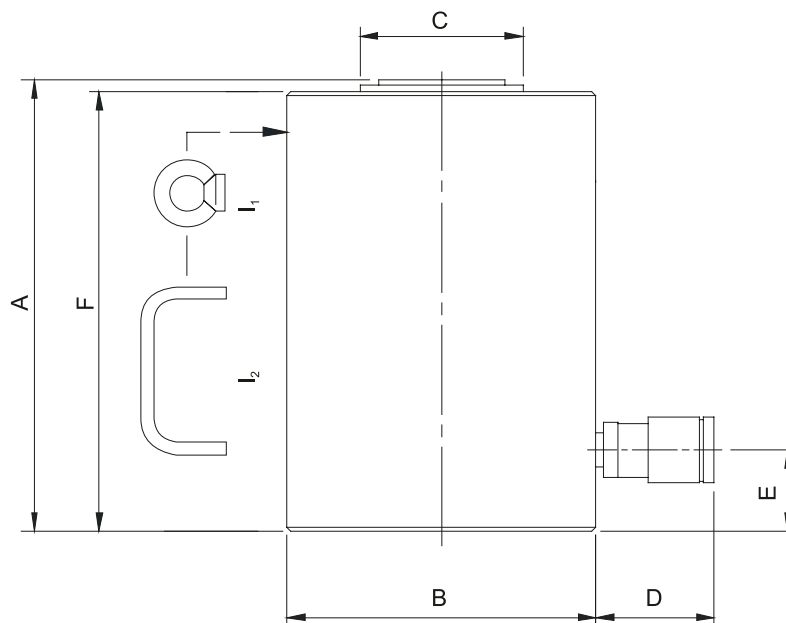


model		HJ 100 G 15	HJ 100 G 30	HJ 150 G 15	HJ 150 G 30	HJ 200 G 15	HJ 200 G 30
art no		100.112.039	100.112.040	100.112.046	100.112.047	100.112.048	100.112.049
max. working pressure	bar/Mpa	720 / 72	720 / 72	720 / 72	720 / 72	720 / 72	720 / 72
<b>tonnage</b>	<b>t</b>	100	100	150	150	200	200
<b>stroke</b>	<b>mm</b>	150	300	150	300	150	300
<b>closed height</b>	<b>mm</b>	309	497	317	502	327	507
capacity	kN/t	1029.3 / 105	1029.3 / 105	1538.9 / 156.9	1538.9 / 156.9	2040.6 / 208.1	2040.6 / 208.1
effective pressure area	cm <sup>2</sup>	143	143	213.8	213.8	283.5	283.5
required oil content (effective)	cc	2145	4290	3207	6414	4253	8505
connection		A 118	A 118	A 118	A 118	A 118	A 118
cylinder type		high tonnage	high tonnage	high tonnage	high tonnage	high tonnage	high tonnage
acting type		single	single	single	single	single	single
return type		gravity	gravity	gravity	gravity	gravity	gravity
material		steel	steel	steel	steel	steel	steel
weight, ready for use	kg	51.0	82.0	74.6	125.3	120.0	184.0

**High tonnage cylinders - Gravity return (dimensions)**



model		HJ 100 G 15	HJ 100 G 30	HJ 150 G 15	HJ 150 G 30	HJ 200 G 15	HJ 200 G 30
dimension A	mm	309	497	317	502	327	507
dimension B	mm	178	178	227	227	261	261
dimension C	mm	105	105	115	115	160	160
dimension D	mm	70	70	70	70	70	70
dimension E	mm	52	52	57	57	60	60
dimension F	mm	302	490	310	495	320	500
I type		I <sub>1</sub>	I <sub>1</sub>	I <sub>1</sub>	I <sub>1</sub>	I <sub>1</sub>	I <sub>1</sub>

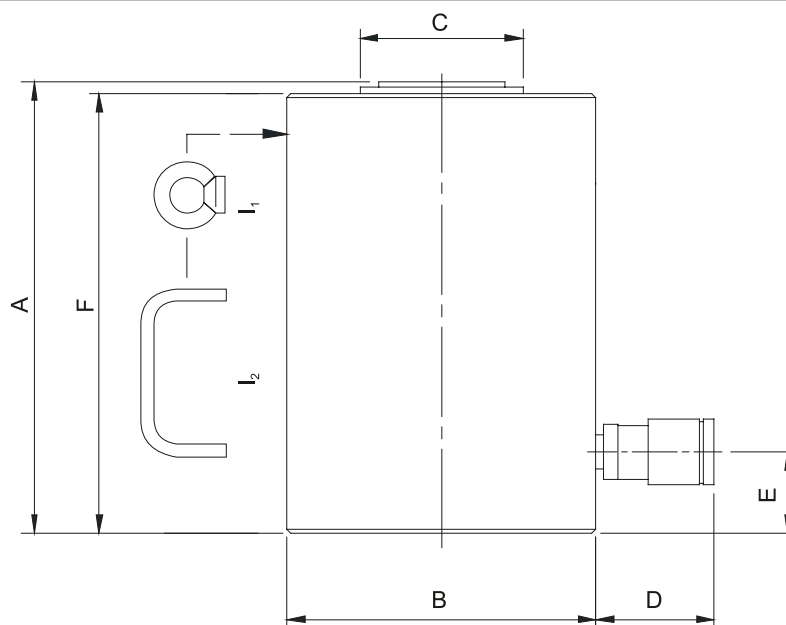


**High tonnage cylinders - Gravity return**


model		HJ 300 G 15	HJ 300 G 30	HJ 400 G 15	HJ 400 G 30	HJ 500 G 15	HJ 500 G 30
art no		100.112.050	100.112.099	100.112.100	100.112.056	100.112.139	100.112.138
max. working pressure	bar/Mpa	720 / 72	720 / 72	720 / 72	720 / 72	720 / 72	720 / 72
<b>tonnage</b>	<b>t</b>	300	300	400	400	500	500
<b>stroke</b>	<b>mm</b>	150	300	150	300	150	300
<b>closed height</b>	<b>mm</b>	382	547	402	572	442	587
capacity	kN/t	2933 / 299.1	2933 / 299.1	3750 / 382.4	3750 / 382.4	4994 / 509.2	4994 / 509.2
effective pressure area	cm <sup>2</sup>	415	415	530	530	707	707
required oil content (effective)	cc	6225	12450	7950	15900	10605	21210
connection		A 118	A 118	A 118	A 118	A 118	A 118
cylinder type		high tonnage	high tonnage	high tonnage	high tonnage	high tonnage	high tonnage
acting type		single	single	single	single	single	single
return type		gravity	gravity	gravity	gravity	gravity	gravity
material		steel	steel	steel	steel	steel	steel
weight, ready for use	kg	238.0	257.0	322.0	408.0	386.0	511.0

**High tonnage cylinders - Gravity return (dimensions)**


model		HJ 300 G 15	HJ 300 G 30	HJ 400 G 15	HJ 400 G 30	HJ 500 G 15	HJ 500 G 30
dimension A	mm	382	547	402	572	442	587
dimension B	mm	316	316	358	358	412	412
dimension C	mm	190	190	200	200	210	210
dimension D	mm	70	70	70	70	70	70
dimension E	mm	70	70	76	76	85	85
dimension F	mm	370	540	395	565	435	580
I type		I <sub>1</sub>	I <sub>1</sub>	I <sub>1</sub>	I <sub>1</sub>	I <sub>1</sub>	I <sub>1</sub>





**Features & benefits** ↓

- Usable in all positions
- Protected against ejection of the plunger
- Protected against overpressure on return side
- Flat saddle
  - Prevents damage to the plunger
  - Easy to replace with tilting saddle

**Standard** supplied with ↓

- High Flow female coupler A 118
- Flat saddle

**Available** on request ↓

- Cylinders manufactured in conformity with customer specifications
- Collar thread
- Base mounting holes

Tilting saddles	page	95
Hydraulic pumps	page	143
Hydraulic hoses	page	168
Pressure gauges	page	174



Protected against overpressure on return side

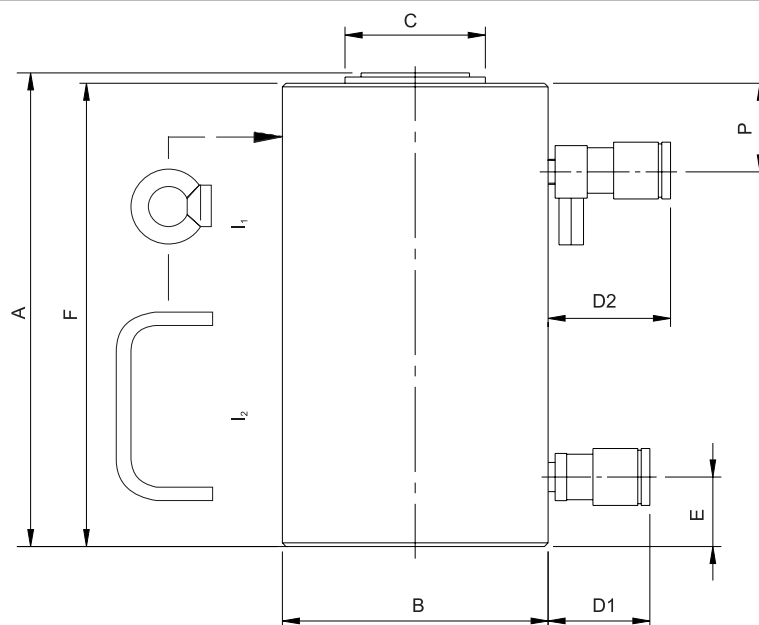


**High tonnage cylinders - Hydraulic return**


model		HJ 50 H 15	HJ 50 H 30	HJ 75 H 15	HJ 75 H 30	HJ 100 H 5	HJ 100 H 15
art no		100.122.002	100.122.022	100.122.003	100.122.004	100.122.009	100.122.052
max. working pressure	bar/Mpa	720 / 72	720 / 72	720 / 72	720 / 72	720 / 72	720 / 72
<b>tonnage</b>	<b>t</b>	50	50	75	75	100	100
<b>stroke</b>	<b>mm</b>	150	300	150	300	50	150
<b>closed height</b>	<b>mm</b>	282	463	347	497	170	309
capacity	kN/t	510.3 / 52	510.3 / 52	747.9 / 76.3	747.9 / 76.3	1029.3 / 105	1029.3 / 105
effective pressure area (press)	cm <sup>2</sup>	70.9	70.9	103.9	103.9	143	143
effective pressure area (retract)	cm <sup>2</sup>	20.6	20.6	53.6	53.6	56.6	56.6
required oil content (press)	cc	1064	2127	1559	3117	716	2145
required oil content (retract)	cc	309	620	755	1509	283	848
connection		A 118	A 118	A 118	A 118	A 118	A 118
cylinder type		high tonnage	high tonnage	high tonnage	high tonnage	high tonnage	high tonnage
acting type		double	double	double	double	double	double
return type		hydraulic	hydraulic	hydraulic	hydraulic	hydraulic	hydraulic
material		steel	steel	steel	steel	steel	steel
weight, ready for use	kg	27.0	44.0	46.0	63.0	29.0	53.0

**High tonnage cylinders - Hydraulic return (dimensions)**


model		HJ 50 H 15	HJ 50 H 30	HJ 75 H 15	HJ 75 H 30	HJ 100 H 5	HJ 100 H 15
dimension A	mm	282	463	347	497	163	309
dimension B	mm	130	130	156	156	178	178
dimension C	mm	80	80	80	80	105	105
dimension D1	mm	70	70	70	70	70	70
dimension D2	mm	85	85	85	85	85	85
dimension E	mm	25	38	47	47	27	52
dimension F	mm	275	456	340	490	163	302
dimension P	mm	70	70	83	83	52	52
l type		l <sub>2</sub>	l <sub>2</sub>	l <sub>2</sub>	l <sub>1</sub>	l <sub>1</sub>	l <sub>1</sub>



**High tonnage cylinders - Hydraulic return**

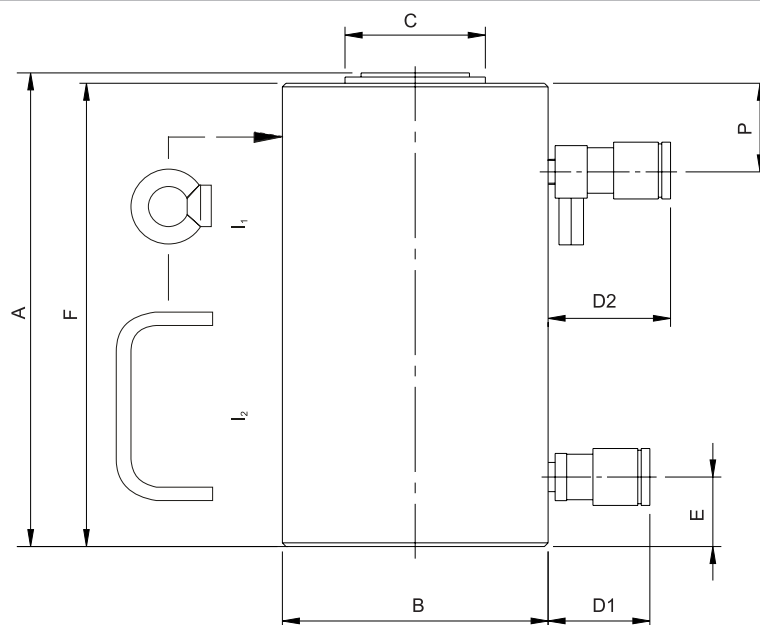


model	HJ 100 H 30	HJ 150 H 15	HJ 150 H 30	HJ 200 H 15	HJ 200 H 30	HJ 300 H 15
art no	100.122.054	100.122.061	100.122.062	100.122.071	100.122.072	100.122.084
max. working pressure	bar/Mpa	720 / 72	720 / 72	720 / 72	720 / 72	720 / 72
<b>tonnage</b>	<b>t</b>	100	150	150	200	300
<b>stroke</b>	<b>mm</b>	300	150	300	150	300
<b>closed height</b>	<b>mm</b>	497	317	502	327	507
capacity	kN/t	1029.3 / 105	1538.9 / 156.9	1538.9 / 156.9	2040.6 / 208.1	2040.6 / 208.1
effective pressure area (press)	cm <sup>2</sup>	143	213.8	213.8	283.5	283.5
effective pressure area (retract)	cm <sup>2</sup>	56.6	110	110	82.5	82.5
required oil content (press)	cc	4290	3207	6414	4253	8505
required oil content (retract)	cc	1695	1650	3300	1238	2475
connection		A 118	A 118	A 118	A 118	A 118
cylinder type		high tonnage	high tonnage	high tonnage	high tonnage	high tonnage
acting type		double	double	double	double	double
return type		hydraulic	hydraulic	hydraulic	hydraulic	hydraulic
material		steel	steel	steel	steel	steel
weight, ready for use	kg	85.0	76.0	128.0	121.0	186.0

**High tonnage cylinders - Hydraulic return (dimensions)**



model	HJ 100 H 30	HJ 150 H 15	HJ 150 H 30	HJ 200 H 15	HJ 200 H 30	HJ 300 H 15
dimension A	mm	497	317	502	327	507
dimension B	mm	178	227	227	261	316
dimension C	mm	105	115	115	160	190
dimension D1	mm	70	70	70	70	70
dimension D2	mm	85	85	85	85	85
dimension E	mm	52	57	57	60	80
dimension F	mm	490	310	495	320	500
dimension P	mm	70	55	70	60	75
l type		l <sub>r</sub>	l <sub>r</sub>	l <sub>r</sub>	l <sub>r</sub>	l <sub>r</sub>



**High tonnage cylinders - Hydraulic return**

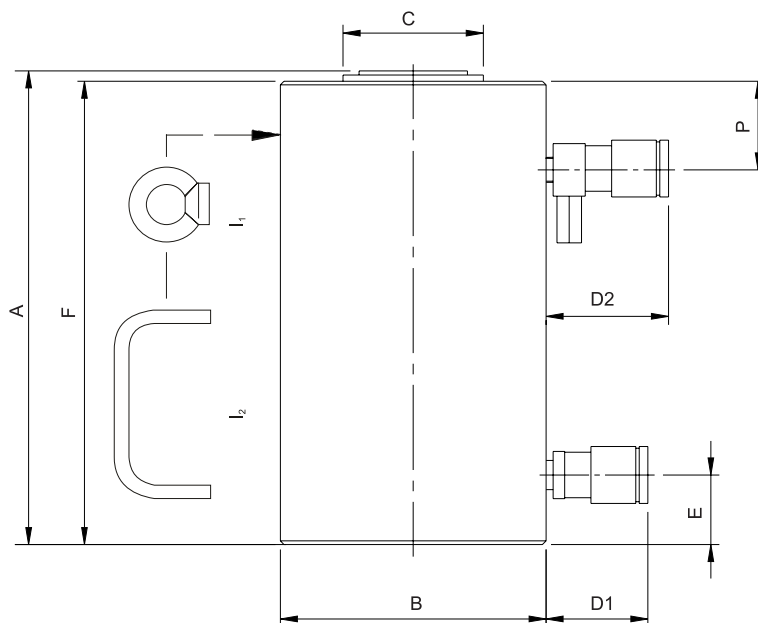


model	HJ 300 H 30	HJ 400 H 15	HJ 400 H 30	HJ 500 H 15	HJ 500 H 30
art no	100.122.083	100.122.091	100.122.092	100.122.043	100.122.038
max. working pressure	bar/Mpa 720 / 72	720 / 72	720 / 72	720 / 72	720 / 72
<b>tonnage</b>	<b>t</b> 300	400	400	500	500
<b>stroke</b>	<b>mm</b> 300	150	300	150	300
<b>closed height</b>	<b>mm</b> 547	402	572	442	587
capacity	kN/t 2933 / 299.1	3750 / 382.4	3750 / 382.4	4994 / 509.2	4994 / 509.2
effective pressure area (press)	cm <sup>2</sup> 415.5	530.9	530.9	707	707
effective pressure area (retract)	cm <sup>2</sup> 131.9	216.7	216.7	360.3	360.3
required oil content (press)	cc 12450	7950	15900	10605	21210
required oil content (retract)	cc 3930	3238	6476	5400	10800
connection	A 118	A 118	A 118	A 118	A 118
cylinder type	high tonnage	high tonnage	high tonnage	high tonnage	high tonnage
acting type	double	double	double	double	double
return type	hydraulic	hydraulic	hydraulic	hydraulic	hydraulic
material	steel	steel	steel	steel	steel
weight, ready for use	kg 360.0	325.0	413.0	390.0	520.0

**High tonnage cylinders - Hydraulic return (dimensions)**



model	HJ 300 H 30	HJ 400 H 15	HJ 400 H 30	HJ 500 H 15	HJ 500 H 30
dimension A	mm 547	402	572	442	587
dimension B	mm 316	358	358	412	412
dimension C	mm 190	200	200	210	210
dimension D1	mm 70	70	70	70	70
dimension D2	mm 85	85	85	85	85
dimension E	mm 80	76	76	85	85
dimension F	mm 540	395	565	435	580
dimension P	mm 75	80	80	90	90
l type	l <sub>r</sub>	l <sub>r</sub>	l <sub>r</sub>	l <sub>r</sub>	l <sub>r</sub>







**Features & benefits** ↓

- Usable in all positions
- Safe because of mechanical load locking
- Suitable for sustained load
- Flat saddle
  - Prevents damage to the plunger
  - Easy to replace with tilting saddle

**Standard** supplied with ↓

- High Flow female coupler A 118
- Flat saddle

**Available** on request ↓

- Cylinders manufactured in conformity with customer specifications
- Collar thread
- Base mounting holes

Tilting saddles	page	95
Hydraulic pumps	page	143
Hydraulic hoses	page	168
Pressure gauges	page	174



Safe because of mechanical load locking



**Locknut cylinders - Gravity return**


model		HJ 10 G 15 SN	HJ 25 G 15 SN	HJ 50 G 15 SN	HJ 100 G 15 SN	HJ 150 G 15 SN	HJ 250 G 15 SN
art no		100.082.003	100.082.002	100.082.001	100.082.000	100.112.136	100.112.083
max. working pressure	bar/Mpa	720 / 72	720 / 72	720 / 72	720 / 72	720 / 72	720 / 72
<b>tonnage</b>	<b>t</b>	10	25	50	100	150	250
<b>stroke</b>	<b>mm</b>	150	150	150	150	150	150
<b>closed height</b>	<b>mm</b>	270	283	307	323	363	385
capacity	kN/t	99.3 / 10.1	238.9 / 24.4	510.3 / 52	1029.3 / 105	1538.9 / 156.9	2493.8 / 254.3
effective pressure area	cm <sup>2</sup>	13.8	33.2	70.9	143	213.8	340.6
required oil content (effective)	cc	210	498	1065	2150	3207	5195
connection		A 118	A 118	A 118	A 118	A 118	A 118
cylinder type		lock nut	lock nut	lock nut	lock nut	lock nut	lock nut
acting type		single	single	single	single	single	single
return type		gravity	gravity	gravity	gravity	gravity	gravity
material		steel	steel	steel	steel	steel	steel
weight, ready for use	kg	5.9	14.0	34.0	71.0	101.0	180.0

**Locknut cylinders - Gravity return (dimensions)**


model		HJ 10 G 15 SN	HJ 25 G 15 SN	HJ 50 G 15 SN	HJ 100 G 15 SN	HJ 150 G 15 SN	HJ 250 G 15 SN
dimension A	mm	270	283	307	323	363	385
dimension B	mm	60	90	135	190	212	300
dimension C	mm	42	65	95	135	165	210
dimension D	mm	70	70	70	70	70	70
dimension E	mm	25	25	25	25	35	40
dimension F	mm	242	257	272	287	305	330
I type			l <sub>2</sub>	l <sub>2</sub>	l <sub>1</sub>	l <sub>1</sub>	l <sub>1</sub>

