



Features & benefits ↓

- Compact, flat version, efficient in case of limited insertion space
- Usable in all positions
- Protected against ejection of the plunger
- Dirt scraper ring
 - Protects against pollution
 - Increases the life span
- Splined plunger, no saddle needed

Standard supplied with ↓

- High Flow female coupler A 118

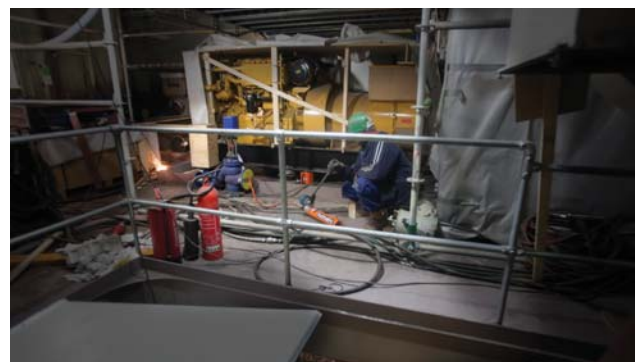
Available on request ↓

- Cylinders manufactured in conformity with customer specifications
- Collar thread
- Base mounting holes

Hydraulic pumps	page	143
Hydraulic hoses	page	168
Pressure gauges	page	174



Splined plunger, no saddle needed



Short stroke cylinders - Spring return


model		HSC 10 S 5	HSC 20 S 5	HSC 30 S 5	HSC 50 S 5	HSC 100 S 5
art no		100.112.300	100.112.301	100.112.302	100.112.303	100.112.304
max. working pressure	bar/Mpa	720 / 72	720 / 72	720 / 72	720 / 72	720 / 72
tonnage	t	10	20	30	50	100
stroke	mm	50	50	50	50	50
closed height	mm	100	103	106	117	141
capacity	kN/t	99.8 / 10.2	203.6 / 20.8	318.1 / 32.4	510.4 / 52	1030.6 / 105.1
effective pressure area	cm ²	13.9	28.3	44.2	70.9	143.1
required oil content (effective)	cc	69.3	141.4	221	354	716
connection		A 118	A 118	A 118	A 118	A 118
cylinder type		short stroke	short stroke	short stroke	short stroke	short stroke
acting type		single	single	single	single	single
return type		spring	spring	spring	spring	spring
material		steel	steel	steel	steel	steel
weight, ready for use	kg	2.9	5.5	6.1	9.7	22.2

Short stroke cylinders - Spring return (dimensions)


model		HSC 10 S 5	HSC 20 S 5	HSC 30 S 5	HSC 50 S 5	HSC 100 S 5
dimension A	mm	100	103	106	117	141
dimension B	mm	70	98	104	128	173
dimension C	mm	36	50	62	75	110
dimension D	mm	77	77	76	76	76
dimension E	mm	15	15	19	19	24
dimension F	mm	99	102	104	116	139
dimension Q	mm					49
angle A1	°	5	5			
angle A2	°					40
l type						l ₂

