

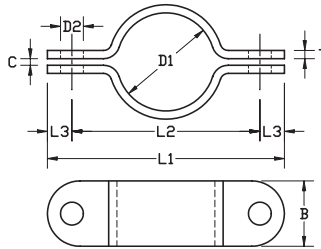
# Halsjern DVS 31002

## Pipe clamp H-DVS 31002



- ■ Todelt fladjernsrørbøjle.
- ■ Fås sorte, primet eller syrefast AISI 316.

- 🇬🇧 Two-part pipe clamp.
- Black, primed or acid resistant AISI 316.



Str. / Size D1 mm	Rør med udvendig dia. på: Pipes with external dia. of. mm	B mm	C mm	Tol. %	D2 mm	L1 mm	L2 mm	L3 mm	Tykkelse/ Thickness mm	Bolt
21	20/21,3/22	25	6	+1/0	11	80	60	10	4	M10
26	25/26,9	25	6	+1/0	11	85	65	10	4	M10
29	28/3	25	6	+1/0	11	90	70	10	4	M10
34	33,7/35	25	6	+1/0	11	95	75	10	4	M10
38	38	30	6	+1/0	11	105	85	10	5	M10
43	42/42,4	30	6	+1/0	11	110	90	10	5	M10
45	44,5	30	6	+1/0	11	115	95	10	5	M10
49	48,3	30	6	+1/0	11	120	100	10	5	M10
59	54/57/60,3	40	8	+1/0	14	145	115	15	5	M12
77	76,1	40	8	+2/0	14	165	135	15	5	M12
89	88,9	40	8	+2/0	14	180	150	15	5	M12
108	108	50	8	+2/0	18	210	180	15	6	M16
115	114,3	50	10	+2/0	18	215	185	15	6	M16
133	133	50	10	+2/0	18	235	205	15	6	M16
140	139,7	50	10	+2/0	18	245	215	15	6	M16
159	159	50	10	+2/0	18	265	235	15	6	M16
169	168,3	50	10	+2/0	18	275	245	15	6	M16
194	193,7	50	10	+2/0	18	300	270	15	6	M16
220	219,1	60	12	+3/0	22	335	295	20	8	M20
273	267/273	60	12	+3/0	22	405	365	20	8	M20
324	323,9	60	12	+3/0	22	460	420	20	8	M20
350	355,6	70	14	+3/0	27	560	442	30	10	M24
400	406,4	70	14	+3/0	27	560	500	30	10	M24
450	457,2	70	14	+3/0	27	618	558	30	10	M24



31002  
Galvaniseret / Galvanized



31002  
Primet / Primed



31002  
Syrefast / Acid resistant



31002  
Sort / Black

# Halsjern DVS 31004

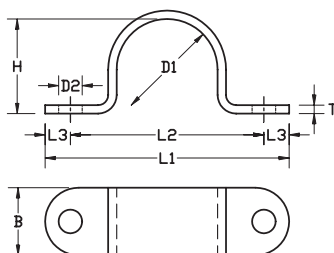
## Pipe clamp H-DVS 31004



- ■ Enkelt fladjernsrørbøjle.
- ■ Fås i varmgalvaniseret eller syrefast AISI 316.

One part pipe clamp.

- 🇬🇧 Available in hot galvanized or acid resistant AISI 316.



Str. / Size D1 mm	Rør med udvendig dia. på: Pipes with external dia. of. mm	B mm	D2 mm	H mm	Tol. %	L1 mm	L2 mm	L3 mm	Tykkelse/ Thickness mm	Bolt
23	20/21,3/22	25	11	18	+1/0	80	60	10	4	M10
28	25/26,9	25	11	24	+1/0	85	65	10	4	M10
32	28/3	25	11	27	+1/0	90	70	10	4	M10
37	33,7/35	25	11	33	+1/0	95	75	10	4	M10
40	38	30	11	35	+1/0	105	85	10	5	M10
44	42/42,4	30	11	39	+1/0	110	90	10	5	M10
46	44,5	30	11	41	+1/0	115	95	10	5	M10
50	48,3	30	11	45	+1/0	120	100	10	5	M10
58	54	30	14	52	+1/0	135	105	15	5	M12
62	57/60,3	40	14	56	+1/0	145	115	15	5	M12
79	76,1	40	14	72	+2/0	165	135	15	5	M12
92	88,9	40	14	85	+2/0	180	150	15	5	M12
111	108	50	18	103	+2/0	210	180	15	6	M16
117	114,3	50	18	109	+2/0	215	185	15	6	M16
136	133	50	18	128	+2/0	235	205	15	6	M16
142	139,7	50	18	135	+2/0	245	215	15	6	M16
162	159	50	18	154	+2/0	265	235	15	6	M16
170	168,3	50	18	162	+2/0	275	245	15	6	M16
198	193,7	50	18	189	+2/0	300	270	15	6	M16
222	219,1	50	18	214	+3/0	325	295	15	6	M16
276	267/273	60	22	267	+3/0	405	365	20	8	M20
328	323,9	60	22	318	+3/0	460	420	20	8	M20
360	355,6	60	22	350	+3/0	495	455	20	8	M20



31004  
Galvaniseret / Galvanized



31004  
Primet / Primed



31004  
Syrefast / Acid resistant



31004  
Sort / Black